



## Rabbit anti VEGFR-2 (CD309) Polyclonal Antibody

Alternative Name(s): vascular endothelial growth factor receptor 2; VEGFR2

### Order Information

- **Description:** VEGFR-2 (CD309)
- **Catalogue:** 602-100
- **Lot:** See label
- **Size:** 100ug/200ul
- **Host:** Rabbit
- **Clone:** nan
- **Application:** IHC(P), WB
- **Reactivity:** Hu, Ms, Rt

### **ANTIGEN PREPARATION**

A synthetic peptide corresponding to the extracellular domain of human VEGFR-2 protein. This sequence is identical within human, mouse and dog.

### **BACKGROUND**

Vascular endothelial growth factor receptor-2 (VEGFR-2), also known as CD309 antigen, the earliest known marker for vascular endothelia cells, is essential in vasculogenesis and angiogenesis. Binding of the dimeric VEGF-A to the extracellular domains of two monomeric receptors induces dimerization and activation of tyrosine kinase at tyrosine residues Y951, Y1054 and Y1059 in the kinase domain serve as positive regulatory sites. Phosphorylation at Y951 of the kinase insert is related to the migration of endothelial cells for tumor vascularization and growth.

### **PURIFICATION**

The Rabbit IgG is purified by Epitope Affinity Purification

### **FORMULATION**

This affinity purified antibody is supplied in sterile Phosphatebuffered saline (pH7.2) containing antibody stabilizer

### **SPECIFICITY**

This antibody recognizes ~200 and ~240 kDa of human VEGFR-2 protein. This antibody also reacts with mouse. The other species are not tested.

### **STORAGE**

The antibodies are stable for 24 months from date of receipt when stored at -20oC to -70oC. The antibodies can be stored at 2oC-8oC for three month without detectable loss of activity. Avoid repeated freezing-thawing cycles.

### **APPLICATIONS/SUGGESTED WORKING DILUTIONS\***

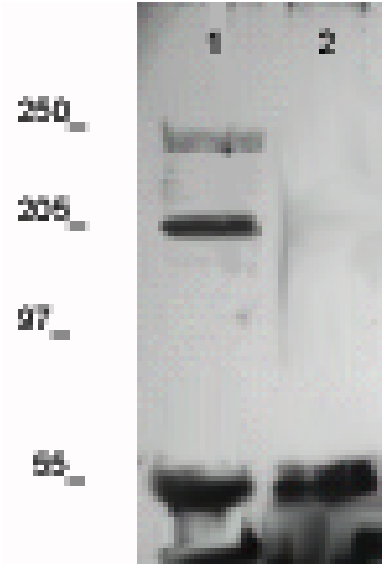
- Western Blot: 0.1-1 µg/ml
- ELISA: 0.01-0.1 µg/ml
- Immunoprecipitation: 2-5 µg/ml
- IHC: 2-10 µg/ml
- Flow cytometry: Not tested
- Molecular Weight: ~200
- Positive Control: Kidney Tissue
- Cellular Location: Cell Membrane

\*Optimal dilutions should be determined by researchers for the specific applications.

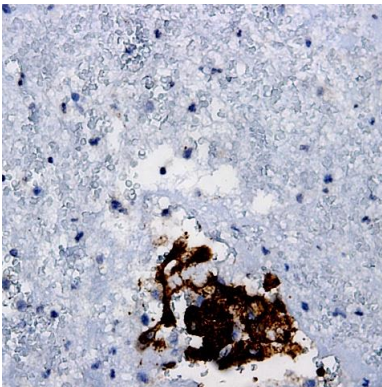
### **FOR RESEARCH USE ONLY.**

AbboMax, Inc 2528 Qume Drive, Suite 8, San Jose, California 95131, USA  
1 408-573-1898 (Tel). 1 408-573-1858 (Fax). [www.abbomax.com](http://www.abbomax.com) [info@abbomax.com](mailto:info@abbomax.com)

## DATA ATTACHMENTS



Western Blot: The whole cell lysate derived from human umbilical vein endothelial cell was stimulated by VEGF-A for 20 min, then immunoprecipitated by Rabbit anti-VEGFR-2 (Cat#602-100) followed by immunoprobng with Rabbit anti-VEGFR-2 (Cat#602-100) at 1:500. The immunoreactive bands are observed around ~200kDa (non-phospho form) and ~240 kDa (Phospho-form) (lane 1). The lane 2 is a negative control.



Immunohistochemistry: Human Breast carcinoma (FFPE) stained with Rabbit antiVEGFR-2 (Cat# 602-100) at 1:200 for 10 min @ RT. Staining of formalin-fixed tissue requires boiling tissue sections in 10 mM Citrate Buffer, pH 6.0 for 10 min followed by cooling at RT for 20 min.

## REFERENCES

### FOR RESEARCH USE ONLY.